

# SSJ Group Co.,LTD



# Main introduction

- ◆ SSJ GROUP CO.,LTD mainly produces marine welded or founded any pipe head, deck dressing,hatch cover fitting and air condition fitting,these products all have been obtained approved certificate of many classification and ISO9001---2000.

Our marine welded air pipe head have firstly passed many classification's approval in china after carry out the nev standard.We have already gained certificate of CCS,DNV,ABS,GI,BV,IR,NK and RINA.

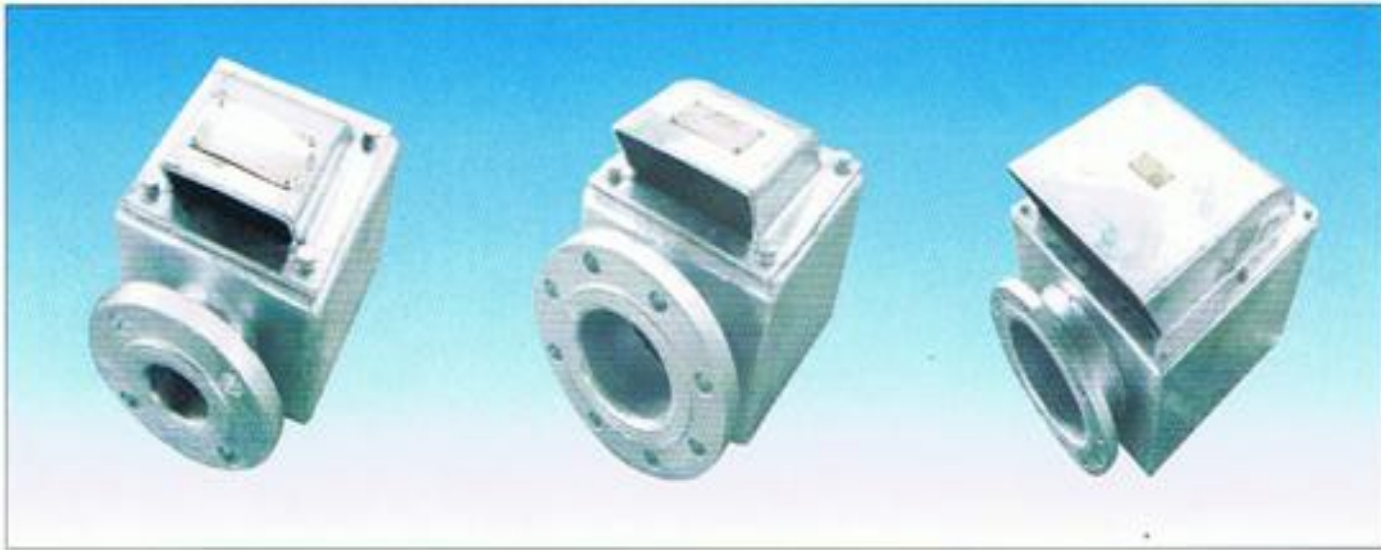
Otherwise,our deck dressing already have been becoming excellent product in craft brother in china depend on our uncommon spirit of company,the product have passed approval of ABS,DNV,CCS,GL,EC and LR.

The agency acts in the spirit of the rely of "Quality First,service Superior",we will supply service to you with all ours heart.

# AIR PIPE HEAD

## 焊接式浮筒空气管头 WELDING TYPE AIR PIPE HEAD

结构型式  
Construction Model



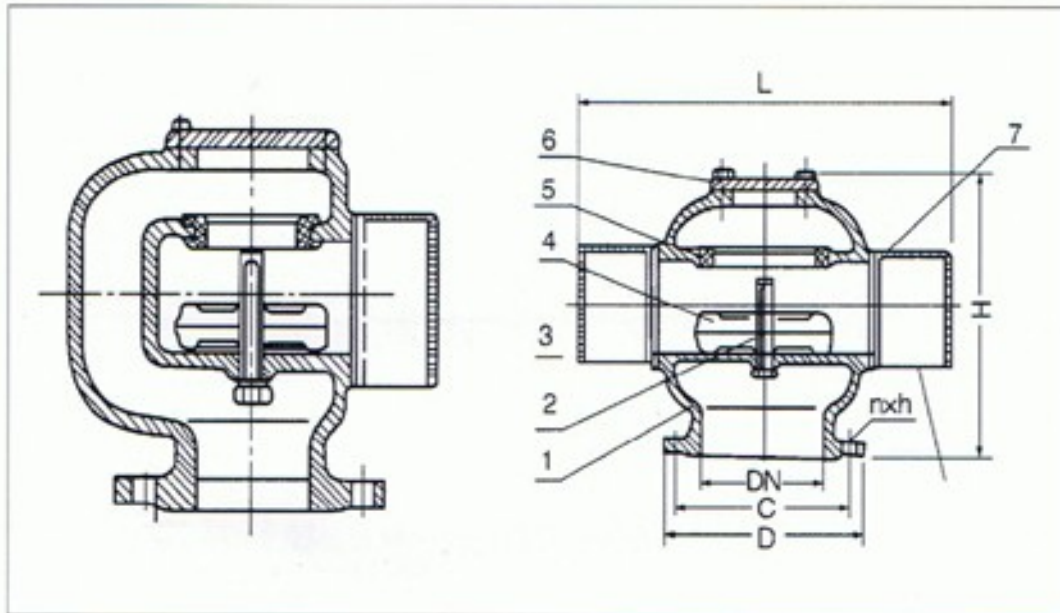
# Founding type air pipe head

## 铸造式空气管头

FOUNDING TYPE AIR PIPE HEAD

### 结构型式

Construction Model

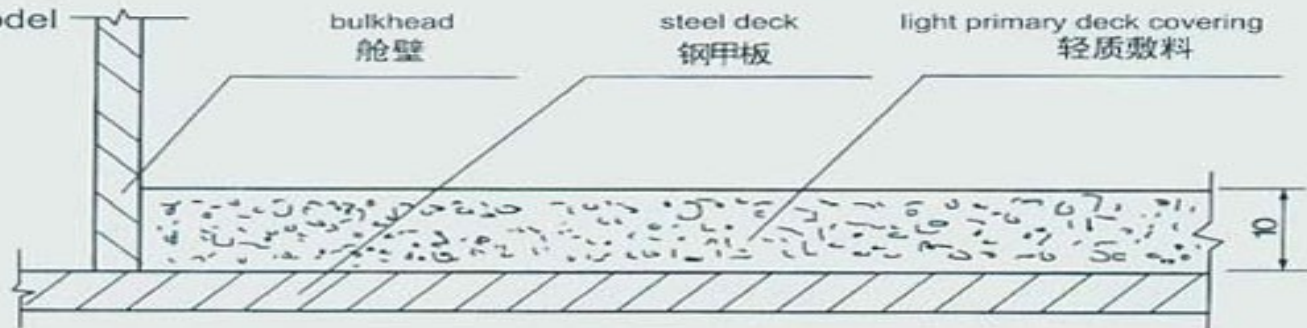


# Light primary deck covering

## JZ-1型轻质甲板基层敷料 JZ-1 LIGHT PRIMARY DECK COVERING

### 结构型式:

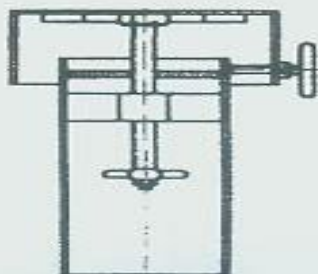
Construction Model



### 技术指标:

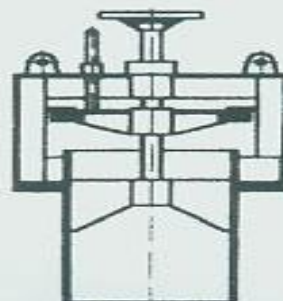
Technical Index

序号 NO.	项目	Index	指标 Value	执行标准 Standard Accepted Manufacture
1	密度	Density	$\leq 1500\text{kg/m}^3$	Q/321282VCD01-1999
2	抗折强度	Modulus of rupture	$\geq 3\text{MPa}$	
3	抗压强度	Compressive strength	$\geq 8\text{Mpa}$	
4	初凝时间	Initial setting time	$\geq 1\text{h}$	
5	终凝时间	Final setting time	$\geq 24\text{h}$	
6	单位面积重量	Weight per square meter	$\leq 1.5\text{kg/mm/m}^2$	



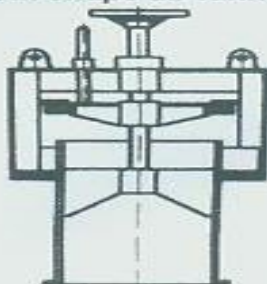
**A型菌形通风筒**

Mushroom shape air funnel Type A



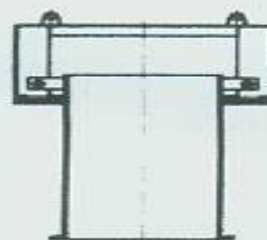
**B型菌形通风筒**

Mushroom shape air funnel Type B



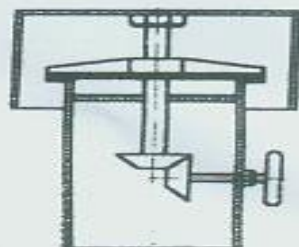
**C型菌形通风筒**

Mushroom shape air funnel Type C



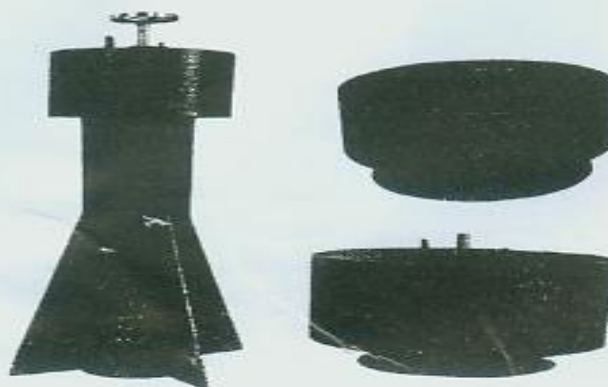
**D型菌形通风筒**

Mushroom shape air funnel Type D



**E型菌形通风筒**

Mushroom shape air funnel Type E



# CB693 油 舱 甲 板 操 纵 装 置

CB693 Cargo Tank Deck Gear

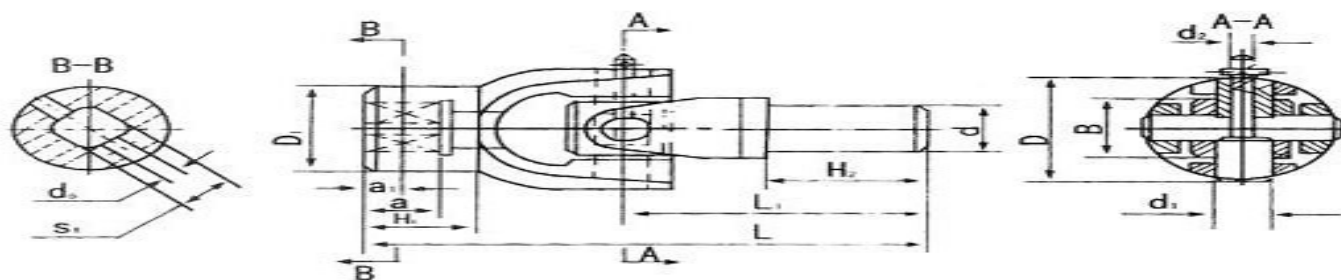


表2 Table2 mm

S <sub>1</sub>	d	L	L <sub>1</sub>	H <sub>1</sub>	H <sub>2</sub>	D	D <sub>1</sub>	a	a <sub>1</sub>	d <sub>0</sub>	d <sub>1</sub>	d <sub>2</sub>	B
24	33	184	100	40	54	64	48	30	15	8	20	11	40
27	38.5	210	120	44	64	74	58	34	17	10	22	12	44
32													

● 中间支架的型式和基本尺寸见图3和表3

Structure and General dimension for support in midet see Fig.3 & Table3.

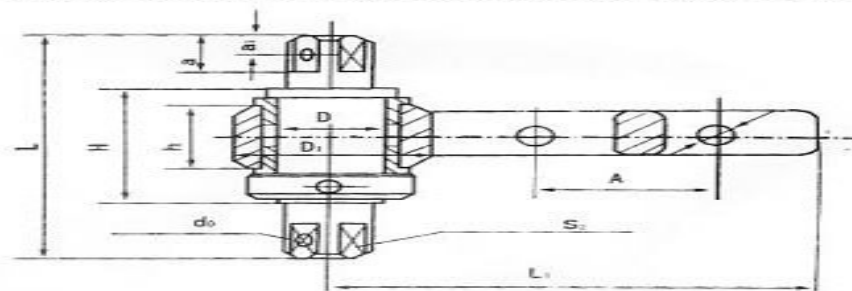
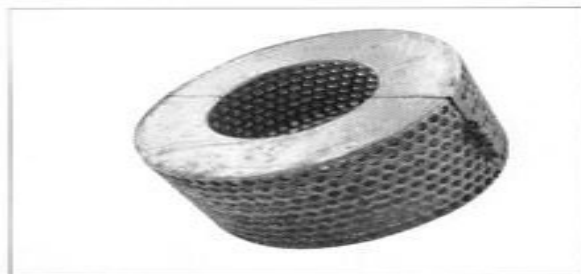


表3 Table3 mm

S <sub>2</sub>	L	H	D	a	a <sub>1</sub>	d <sub>0</sub>	L <sub>1</sub>	D <sub>1</sub>	b	A	d
24	146	66	35	30	15	8	140	65	34	60	15
27	176	76	40	35	17	10	150	70	40		17
32	182	82	45				160	80	42		

# 甲板漏水口

Scupper



标准图号	产品名称	型号	规格
CB496-74	甲板漏水口 SUPPER	SB	40-100
CB496-74	甲板漏水口 SUPPER	SA	40-100
CBM1068-81 C B 496-74	甲板漏水口 SUPPER	YB	32-65
CBM1068-81 C B 496-74	甲板漏水口 SUPPER	YA	32-65
CBM1068-81 C B 496-74	甲板漏水口 SUPPER	TA	80-125
CB623-80	吸入滤网 SUCT IONSUPPE	A	25-300
CBM1036-81 CB/T495-95	吸入口 SUCT IONSUPPE	AC	25-300











螺栓式耐火矩形窗 Bolted-in type fire window  
 防火等级:A-60 Fire rating:A-60

A-60级焊接式(螺栓式)船用耐火矩形窗规格尺寸表

序号	透光尺寸		压板尺寸		窗座尺寸		外形尺寸		围壁开口尺寸		玻璃开口尺寸			
	W×H	R	W1×H1	R1	W2×H2	R2	W3×H3	R3	W4×H4	R4	W5×H5	R5	F(T)+22+6=T	E(T)+22+6=T
1	300×425	50	380×505	90	348×473	74	430×555	115	352×477	76	340×465	70	(8)+22+6=36	(10)+22+6=38
2	355×500	50	435×580	90	403×548	74	485×630	115	407×652	76	395×540	70	(8)+22+6=36	(10)+22+6=38
3	400×560	50	480×640	90	448×608	74	530×690	115	452×612	76	440×600	70	(8)+22+6=36	(10)+22+6=38
4	450×630	100	530×710	140	498×648	124	580×760	165	502×682	126	490×670	120	(8)+22+6=36	(10)+22+6=38
5	500×710	100	580×790	140	548×758	124	630×840	165	552×762	126	540×750	120	(10)+22+6=38	(15)+22+6=43
6	560×800	100	640×880	140	608×848	124	690×930	165	612×852	126	600×840	120	(10)+22+6=38	(15)+22+6=43
7	900×630	100	980×710	140	948×678	124	1030×760	165	952×682	126	940×670	120	(12)+22+6=40	(19)+22+6=47
8	1200×800	100	1280×880	140	1248×848	124	1330×930	165	1252×852	126	1240×840	120	(15)+22+6=43	(19)+22+6=47
9	1600×900	100	1680×980	140	1648×948	124	1730×1030	165	1652×952	126	1640×940	120	(15)+22+6=43	(19)+22+6=47
10	1600×1200	100	1680×1280	140	1648×1248	124	1730×1300	165	1652×1252	126	1640×1240	120	(15)+22+6=43	(19)+22+6=47

## 成品油轮钢质油舱盖

钢质油舱盖  
Steel oil hatch



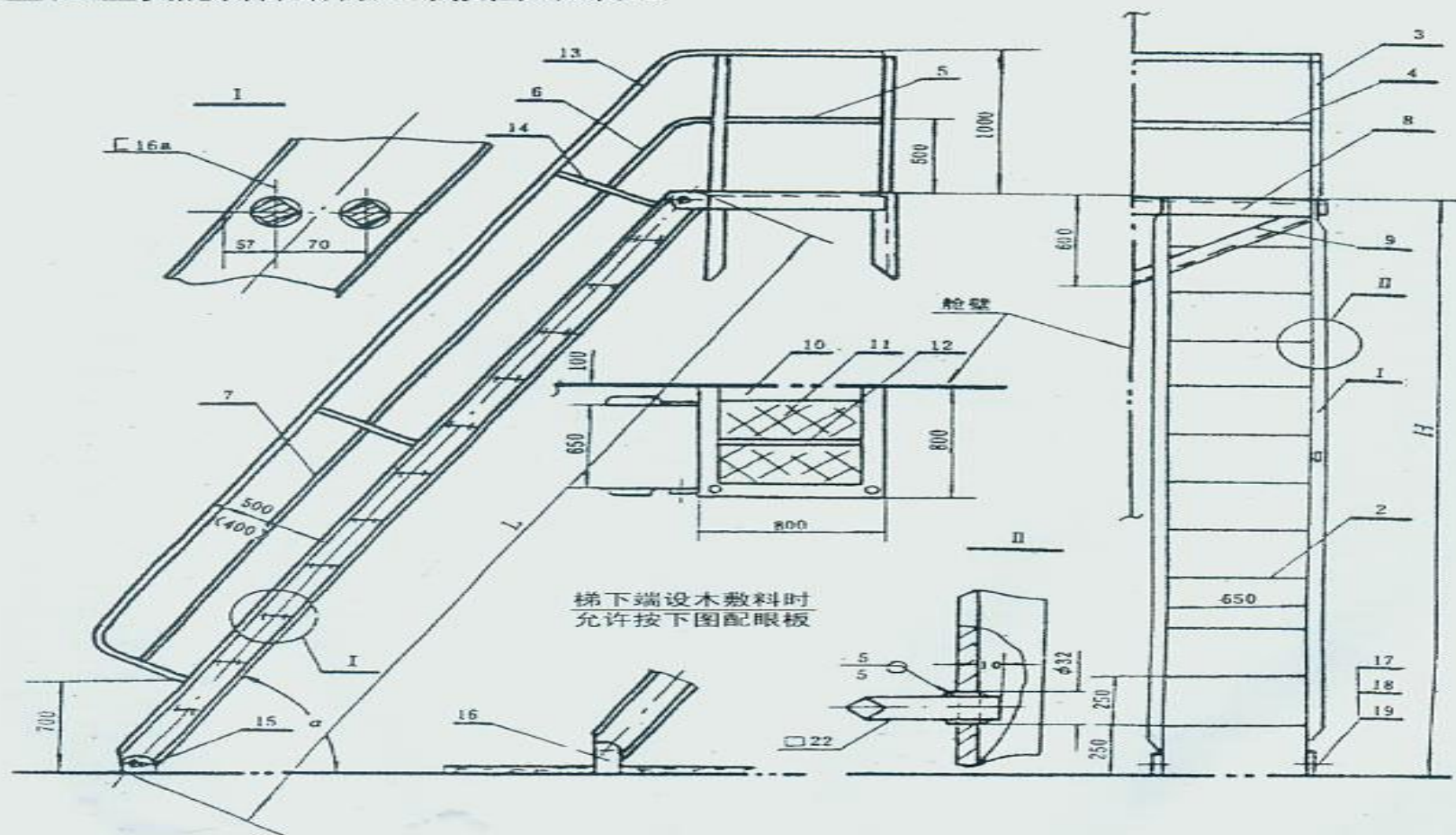
钢质油舱盖  
Steel oin hatch



# 不锈钢斜梯

## STAINLESS STEEL INCLINED LADDER

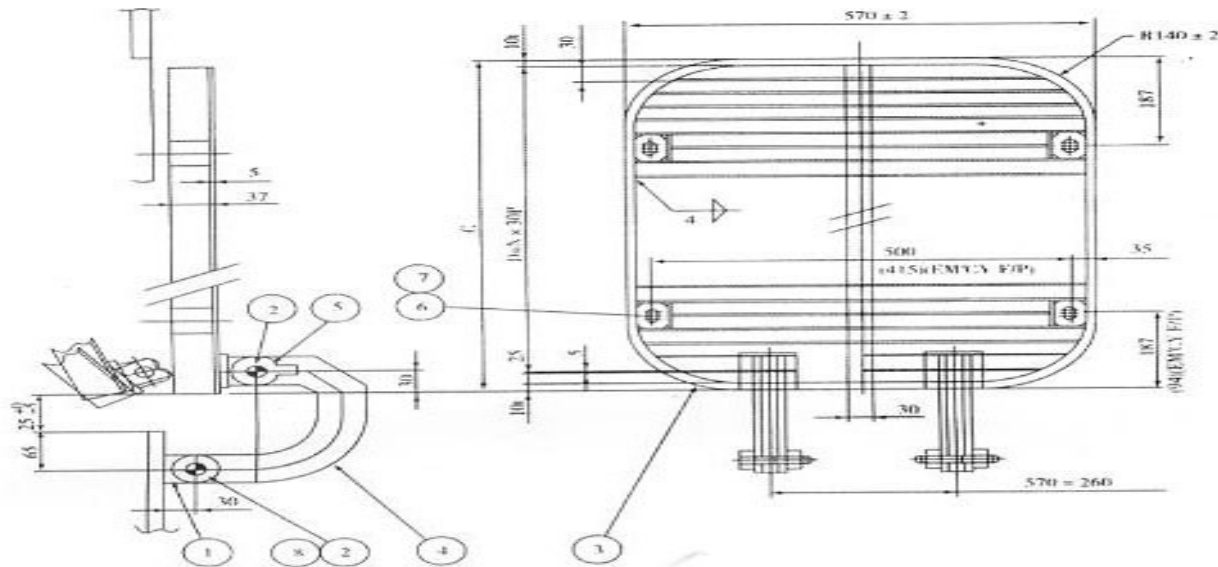
G型和D型货舱斜梯结构尺寸按图3和表3。



- 1—梯架 2—方向踏步 3—扶手 4、5、6、7—栏杆；  
 8—平台框架；9—平台支撑；10—平台扁钢；11—平台钢板  
 网；12—平台扁钢；13—斜梯扶手；14—扶手栏；15—眼板；  
 16—眼板；17—螺栓；18—螺母；19—垫圈

注：图中(400)为 $\alpha=65^\circ$ 度时扶手柱高度。  
 本图为E型，F型扶手与此对称。

# 不 锈 钢 海 水 门 格 栅



## NOTE

1、THE NET AREA THROUGH THE GRATING IS TO BE NOT LESS THAN TWICE THAT OF THE VALVE CONNECTED TO THE SEA INLETS

通过格栅的网面积不低于海水进口阀的面积2倍

DESCRIPTION 说明	C	D	N	FREE AREA 空闲面积 (CM2)	1/D内径	SUC. AREA (Cm <sup>2</sup> )	RATIO OF AREA 面积比	REMARK 备注
	DIMENSION 长度				SUCTION PIPE 吸入管			
P/R SEA CHEST 泵舱海水门	735	690	23	3350	600	2827		
LOW SEA CHEST 低位海水门	735	690	23	3350	600	3318		
HIGH SEA CHEST 高位海水门	735	690	23	3350	600	3318		

8	SPLIT 开口销		4Φ		COPPER ALLOY 铜合金		8		
7	BOLT & WASHER 螺栓和垫圈		M20		SUS 316		4		
6	PAD 复板		5T		SUS 316		4		
5	HINGE SUPPORT 铰接支架		15T		SUS 316		2		
4	HINGE 铰链		10T		SUS 316		2		
3	GRATING 格栅		-		SUS 316		1		
2	BOLT & NUT 螺栓和螺母		M20		SUS 316		4		
1	HINGE SUPPORT 铰接支架		15T		SUS 316		2		
NO.	DESCRIPTION 说明	DIMENSION 长度		MATERIAL 长度		QTY 数量	HDS NO.	REMARK	